

BUILD GREEN NH[®]
We Dream Green[™]



Presents

**NATIONAL ASSOCIATION OF HOME BUILDERS
NAHB-GREEN
NATIONAL GREEN BUILDING STANDARD
THURSDAY OCTOBER 7, 2010**

What is **Green** Building ?

Building homes and buildings to a higher standard of efficiency and healthier building solutions for the world and the human race.



NAHB Green Building Standard™

Origin

The continuation of the National Association of Home Builders Green subcommittee established in 1998 prepared members for a shift towards “Green”. In 2004, the National Association of Home Builders NAHB began to develop the NAHB Model Green Home Building Guidelines.

The first guidelines were first published in 2005 and are the basis of voluntary green building programs in North America.

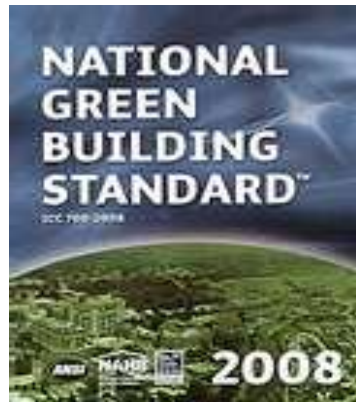
In 2007, NAHB partnered with the ICC to develop the standard. The ICC 700-2008 National Green Building Standard was approved by the American National Standards Institute (ANSI) as an American National Standard.



A New Building Era Established: January 29, 2009

THE FIRST ANSI-APPROVED GREEN BUILDING RATING SYSTEM NOW AVAILABLE FOR BUILDERS, REMODELERS, AND DEVELOPERS.

The National Green Building Standard™ for single-family homes, apartments and condos, residential remodeling and renovation has been approved by the American National Standards Institute (ANSI).



What is Build Green NH® ?



**New Hampshire's official green building certification program for
Residential Builders and Remodelers**

New Hampshire is the first New England State to become an affiliate of the
National Home Builders Association

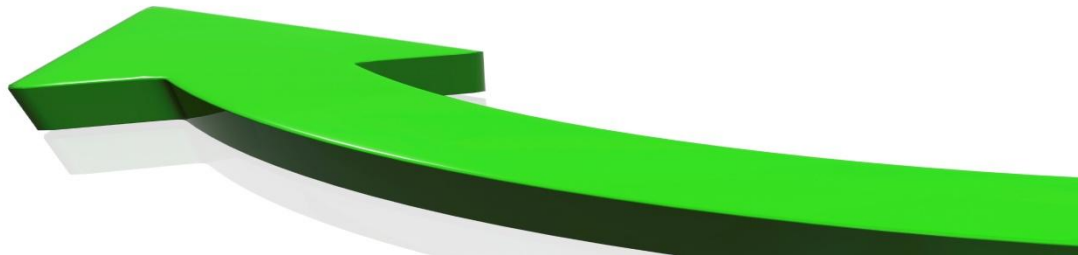
Green Building Program.

Emerald

Gold

Silver

Bronze



NAHB Green Building Standard

- Five Steps to Certification

1. Create a Designer's report at

www.NAHBGreen.org/scoringtool

2. Hire a verifier – you can find one at

www.nahbgreen.org/WholsGreen/findverifier.aspx

3. Schedule a rough inspection

4. Complete the application

5. Schedule a final inspection

NHAB - Easy Navigation Scoring Tool

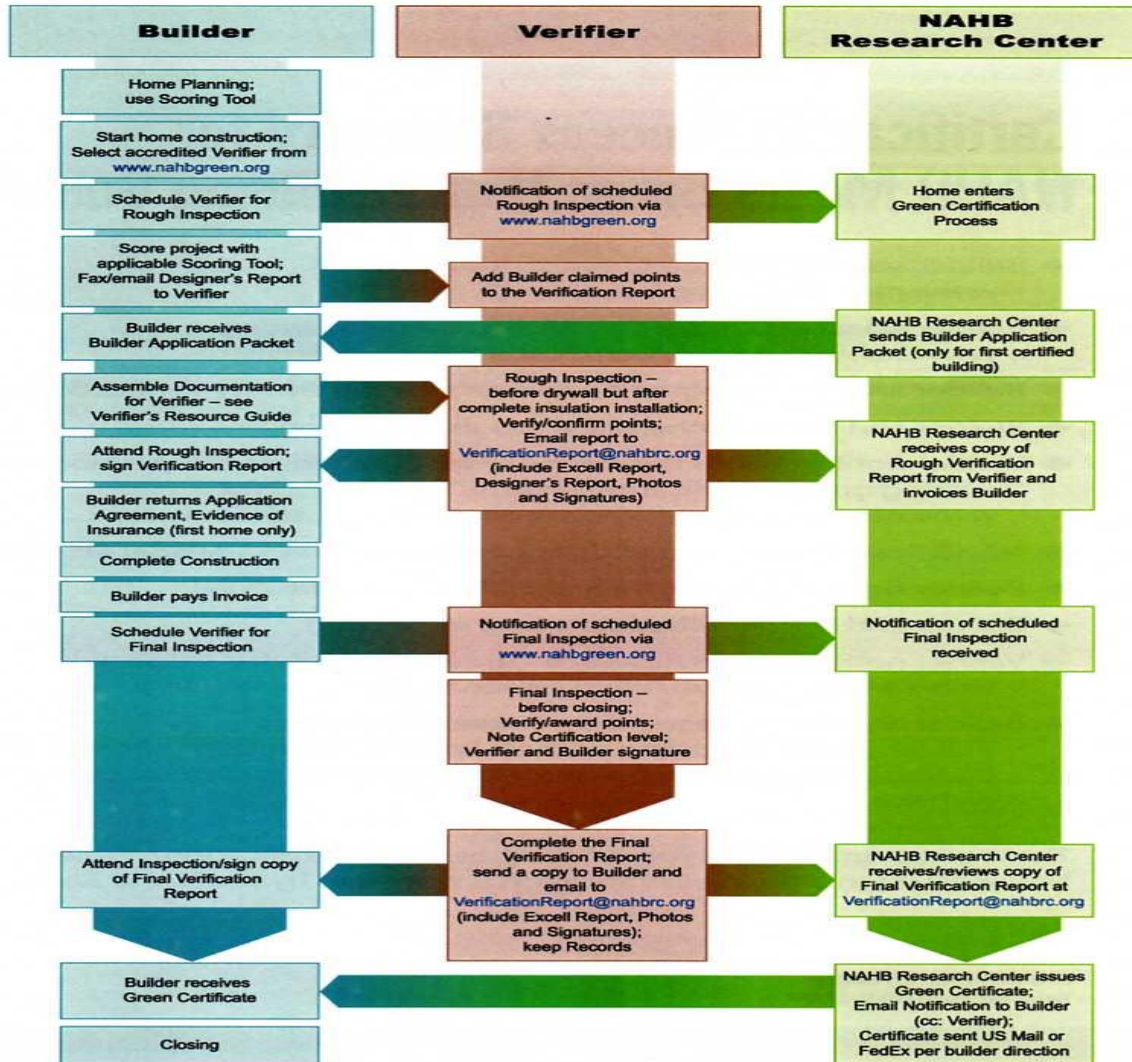


How GREEN is my home ?



National Green Building Certification

Verification Process Flowchart



Copyright © NAHB Research Center, Inc. All rights reserved. The NAHB Research Center authorizes the use of this document only by those individuals participating in the NAHB Research Center's National Green Building Certification and solely for the purposes of each individual's participation therein. This document is protected by United States copyright law.

For more information, visit www.nahbgreen.org.

Verifier

Verifiers accredited by the NAHB Research Center for its national green home certification program are expected to independently confirm, through a process of document review and on-site inspections, that all green program requirements and points specified by a builder are in place for a candidate home.



Locate an accredited Verifier on the Build Green NH Website.

www.buildgreennh.com

NAHB Green Building Standard

- Standard sections

500 LOT DESIGN, PREPARATION, AND DEVELOPMENT

600 RESOURCE EFFICIENCY

700 ENERGY EFFICIENCY

800 WATER EFFICIENCY

900 INDOOR ENVIRONMENTAL QUALITY

1000 OPERATION, MAINTENANCE AND BUILDING
OWNER EDUCATION

NAHB Green Building Standard

- Standard sections

500 LOT DESIGN, PREPARATION, AND DEVELOPMENT

- Location
- Project Team
- Natural resources
- Access to infrastructure
- Minimal excavation
- Permeable surfaces
- Storm water management
- Erosion control

NAHB Green Building Standard

- Standard sections

700 ENERGY EFFICIENCY

- Performance Path or
- Prescriptive Path
- Third party testing
- ACH 50
- Additional practices
- Appliances, CFL's
- Solar thermal

NAHB Green Building Standard

- Standard sections

- 800 WATER EFFICIENCY

- Irrigation
 - Appliances
 - Insulated pipes
 - Low flush toilets, low flow aerators
 - Rainwater collection
 - Gray water system
 - Composting toilet

NAHB Green Building Standard

- Standard sections

900 INDOOR ENVIRONMENTAL QUALITY

- Moisture control
- No VOC's
- Non-toxic pest control plan
- Water control
- Construction waste management
- Bio-based or recycled content

NAHB Green Building Standard

- Standard sections

- 1000 BUILDING OWNER EDUCATION, OPERATION AND MAINTENANCE**

- Owner's manual
 - Building systems training
 - Green living options
 - Project Diary
 - Information on resources
 - Green Certificates

MODEL GREEN HOMEBUILDING GUIDELINES

WE DREAM Green

| Categories | Bronze | Silver | Gold | Emerald | Section |
|--|------------|------------|------------|------------|----------|
| W ater Efficiency | 14 | 26 | 41 | 60 | 800 |
| E nergy Efficiency | 30 | 60 | 100 | 120 | 700 |
| D esign Lot Preparation, Developments | 39 | 66 | 93 | 119 | 500 |
| R esource Efficiency | 45 | 79 | 113 | 146 | 600 |
| E ducation –Building Owners | 8 | 10 | 11 | 12 | 1000 |
| A ir Quality Indoors | 36 | 65 | 100 | 140 | 900 |
| M anual -Additional Categories | 50 | 100 | 100 | 100 | Standard |
| Total Points | 222 | 406 | 558 | 697 | |

WE DREAM Green !



NATIONAL GREEN BUILDING STANDARD (NGBS)

Speakers: **Build Green NH Council Members**

Gretchen Tillson GDS Associates - Build Green NH Membership Committee

www.gdsassociates.com/NH - gretchen.tillson@gdsassociates.com - 603-656-0336

Carleen Goguen Associated Concrete Coatings, Inc. - Build Green NH Public Relations-Chair

Build Green NH® is a council of the
Homebuilders and Remodelers Association of New Hampshire

The Housing Center

119 Airport Road

Concord NH 03301

603-228-0351

www.buildgreennh.com

Save the Date!



Energy Efficient, Sustainable Building
Fall 2010
BUILDING
NEW HAMPSHIRE
TRADE SHOW & CONFERENCE

November 2, 3 & 4, 2010
Grappone Center, Concord, NH

Join us, learn, exchange ideas & make new connections

Big Impact, Small Footprint

BUILDING
NEW HAMPSHIRE
TRADE SHOW & CONFERENCE

Register Today For Your Chance To Win An iPad
www.buildingnh.com

LUTRON **GRANITE** **RE** **KOHLER** **nhsaves.com**

MEDIA SPONSORS
Coastal Home | Granite State Builder | NH Business Review | NH Home | NH Magazine | Seacoast Ink

November 2,3,4th 2010

Support NH's efforts to move towards Energy Efficiency and Sustainable Building.

Thank you !

GDS Associates *Since 1986*
Manchester, New Hampshire 03101

GDS ASSOCIATES, INC. is a multi-service consulting and engineering firm formed in 1986 and now employs a staff of over 170 in five locations across the U.S. Our broad range of expertise focuses on clients associated with, or affected by, electric, gas, water and wastewater utilities. In addition, we offer information technology, market research, and statistical services to a diverse client base.



Protecting Buildings from Top to Bottom!

Since 1969

Protective Coatings/Concrete Restoration Contractor

Exterior Weather Resistant Barriers
Insulation Foundation Waterproofing Systems
Air Barrier Association of America Certified
Caulking/Sealants and Expansion Joints
Concrete/ Masonry Restoration & Repair

800 367-1219

www.concoat.com