

# THE YANKEE PLANNER



American Planning Association  
Northern New England Chapter  
Making Great Communities Happen

A Publication of the Northern New England Chapter of the American Planning Association

## Maine's Land Use Regulation Commission Approves Largest Rezoning in State History

*By Evan Richert, AICP, Land Use Planning Consultant - Bangor, ME*

In September Maine's Land Use Regulation Commission approved a 380,000-acre Concept Plan and rezoning for the Moosehead Lake Region.

The Land Use Regulation Commission (LURC) governs land use planning and permitting for the 11 million acre unorganized territory of Maine—about half of the state. A Concept Plan is a landowner-initiated, long-term plan for the development and conservation of large blocks of lake shores and related lands. Moosehead Lake, located in northwestern Maine, is the state's largest lake, renowned for its fishing, outdoor recreation, and scenery.

LURC's comprehensive land use plan had identified the Moosehead Lake Region as "an area of special planning need" where new approaches would be needed to balance limited development with protection of forest, wildlife, and recreational resources.

Plum Creek, a timberland management company and real estate investment trust, first submitted a proposed Concept Plan for its Moosehead Lake region holdings in 2005. In response to public comments and Commission hearings, Plum Creek formally amended the plan three times. In June 2009, fol-

**[Continues on Page 8](#)**

## It's Election Time! Make sure to vote

*By Sandrine Thibault, AICP - NNECAPA Public Information Officer*

Yes, election time is here again, national APA election time that is. We offer you a chance to get to know your Region 1 candidates for APA Director and AICP Commissioner. Take a few minutes to read their quick bios and follow the links below to get to know more about each candidate. Choosing the person that will represent us best on the national scene is important so make sure you remember to vote. Each APA member will receive an electronic ballot starting March 2, 2010. The winners will be announced at the National Conference in New Orleans.

**[Continues on Page 9](#)**

Volume 28, Issue 1

**Volume 28, Issue 1  
Winter 2010**

### Inside this issue:

<u><a href="#">President's Message</a></u>	2
<u><a href="#">Merrymeeting Trail in Maine</a></u>	3
<u><a href="#">News from the Planning Commissioners Journal</a></u>	4
<u><a href="#">Professional Development Updates</a></u>	5
<u><a href="#">State Grapevines</a></u>	6

### Special points of interest:

[Book your hotel and register NOW for the 2010 APA National Conference in New Orleans, LA.](#)

## President's Message

*By Peg Elmer - NNECAPA President*

I've received a suggestion that members might appreciate a better understanding of the roles of APA and AICP regional directors and APA leadership in general. This is a great topic to explore a bit right now, as members should receive electronic ballots from APA in the next month or so, with new leadership to be put in place at the April conference in New Orleans. As a long-time member, I would agree that the roles do seem hazy to most of us, and distant.

Anna Breinich would be far better than I at answering this, having put in some years working her way up in the APA leadership. But Anna, who has been our regional AICP Commissioner for a few years, is a current candidate to become AICP President. As a candidate, there are clear guidelines on what she can do during the election cycle. Authoring an article on the ins and outs of APA leadership during this period is viewed as campaigning, which is not allowed. So I'll try, though my one year experience and understanding are more marginal.

APA is governed by its Board of Directors, elected from among its members. The Board is chaired by the APA President, currently Bruce Knight, FAICP, and is meant to work together to set direction on policy, for staff and generally work out details on issues under question. Day-to-day operations are managed by APA staff, headed by Executive Director/CEO Paul Farmer, FAICP. Board members serve four-year terms. Terms are staggered, so half of the board is elected biennially. The current Board is presented at [www.planning.org/apaataglance/leadership/apaboard.htm](http://www.planning.org/apaataglance/leadership/apaboard.htm). AICP is the professional institute of APA and is governed by the AICP Commission, an 8-member body. The Commission provides policy direction on matters relative to the Institute, including CM and AICP Exam.

The position Anna has been nominated for, AICP President-Elect, is a key one on the Board. It's also, if any of you remember us hammering Graham Billingsley at our annual meetings for a couple of years running, a position responsible for representing AICP decisions to the membership, such as the CM requirements and process we were grilling Graham on. Actually, they all share that task of answering members' concerns, questions and attending conferences to do the same. There are "regional" directors for both the APA Board and AICP Commission – we vote for Region I nominees, but they work as a collective on the Board. They are not viewed as only representing a particular region but work as a governing unit to keep APA on the right track from a national perspective. The regional election piece is intended to make sure there is geographic representation.

All Chapter Presidents are part of the Chapter Presidents Council, the infamous CPC. We take up a BIG room, because there's only one other multi-state chapter and one state has two Chapters (New York). And, being the closest to the membership, we're the reality check, giving instant feedback, sometimes quite negative, to Board decisions that can seem removed from the membership. It's like the UN or statehouse – we share microphones with on/off switch – and turn that on and stand up if we ask to speak and are given the floor. I sit behind a big placard that says NNECAPA, in alphabetical order between North Carolina and Ohio.

The elected CPC Chair serves in a non-voting advisory capacity on the APA Board of Directors. Generally, Board and Commission members attend the CPC meeting, and the President of each address us on items on the agenda as needed. So, there is a lot of us on the CPC, but many of the Chapter Presidents turn over on a 2 year term

**[Continues on Page 11](#)**

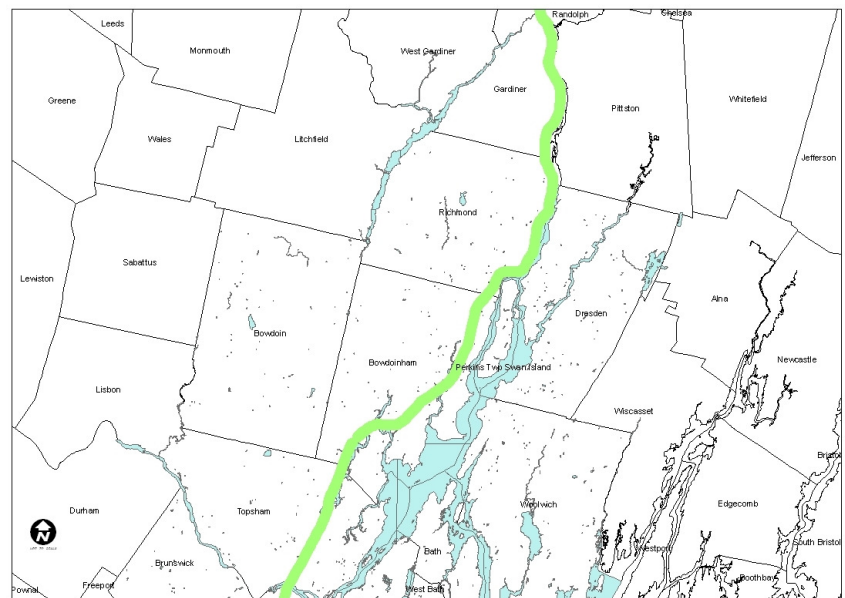
## Merrymeeting Trail (Maine)

*By Nicole Briand, Town Planner & Code Enforcement Officer - Bowdoinham, ME*

The goal of the Merrymeeting Trail is to create a thirty mile rail-with-trail from Topsham through Bowdoinham and Richmond to Gardiner, which connects: Androscoggin River Pedestrian Bike Path in Topsham; the village area in Bowdoinham; the village area in Richmond; the village area in Gardiner; and Kennebec River Rail Trail that links Gardiner, Farmingdale, Hallowell, and Augusta.

The proposed Merrymeeting Trail would serve to connect Brunswick and Augusta and could serve as an alternate route on the East Coast Greenway, a 3,000 mile national trail linking Calais, Maine with Key West, Florida.

The proposed Merrymeeting Trail will strengthen and improve our communities, because it will serve as a regional tool to achieve community and downtown revitalization. The trail would serve as an economic engine bringing consumers, tourists, businesses and jobs to our historic downtown villages, which will provide the economic base necessary to maintain, preserve, revitalize, promote and grow our historic downtown villages. The Merrymeeting Trail would also enhance our communities' connections to several major water bodies, including Merrymeeting Bay. Merrymeeting Bay is a 20,000 acre tidal estuary that is world renowned recreational area with significant natural habitat, popular with locals and tourists for sailing, kayaking, swimming, walking, bird watching, fishing and duck hunting.



**Merrymeeting Trail Corridor - Topsham -- Gardiner**

This project has gained great momentum over the past year with the support of the Towns of Topsham, Bowdoinham & Richmond, the City of Gardiner and several organizations. We are currently working on developing a Merrymeeting Trail logo and website, as well as planning for the corridor study that will be conducted this spring/summer. To date, we have been successful in obtaining the following grants:

- a \$20,000 Regional Challenge Grant from the State Planning Office to support the development of a corridor study; and
- project assistance from the National Park Service for their River, Trails, & Conservation Assistance Program for one year.

## News from the Planning Commissioners Journal

By *Betsey Krumholz, General Manager, Planning Commissioners Journal*

### Winter Issue of Planning Commissioners Journal & New Online Resource About Public Hearings

The feature article in the Winter issue, "Dealing With Contentious Public Hearings," highlights twelve ways of "reducing the heat" at public hearings. They range from holding neighborhood meetings on controversial or complex projects, to focusing public input on relevant review criteria during hearings. In preparing the article, Planning Commissioners Journal editor and author Wayne Senville (who is also a member of the Burlington, VT, Planning Commission) received suggestions from more than two dozen planners and planning commissioners from across the country on what worked best in their communities.

"Virtually every planning commissioner," Senville notes, "will face a public meeting at which tempers flare. One piece of advice I repeatedly heard is 'keep your cool and maintain a respectful environment.'"

"The bottom line," says Senville, "is ensuring that the public feels their voice is heard by the planning commission, while providing commissioners input that will be helpful to their decision-making. That means keeping meetings civil and being clear on exactly what the commission needs to consider in its review."

Also in the Winter issue, an article by consultant Joel Russell, "Building Your Planning Process From the Ground Up." Russell considers how active engagement in the planning process can minimize the likelihood of opposition erupting seemingly out of nowhere near the end of the process. Russell considers this in the context of farmland preservation planning efforts in New York's Hudson River Valley.

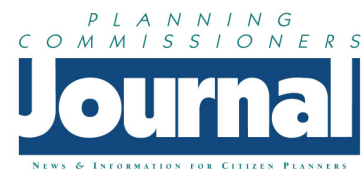
For more on the content of our Winter issue, go to: [www.plannersweb.com](http://www.plannersweb.com) (you'll find the link in our Quick Access sidebar near the top right of the page).

One final, but important, note. In conjunction with Senville's article, we've posted on our PlannersWeb site resources and links on how to deal with contentious public hearings. This material provides a valuable supplement to the published article, and is available at: [www.plannersweb.com](http://www.plannersweb.com)

For more information, contact either:

Betsey Krumholz or Wayne Senville

[pcjoffice@gmail.com](mailto:pcjoffice@gmail.com) 802.864.9083



PLANNING COMMISSIONERS JOURNAL / NUMBER 77 / WINTER 2010  
[www.plannersweb.com](http://www.plannersweb.com)

**From the Ground Up**  
A focused planning process that works by engaging the whole community  
3

**Some Parting Thoughts**  
Eddie Cohen comes back for 19 year anniversary of PCJ column with a look back at some of the key themes that covered  
8

**Planitazen Update**  
Top news stories of 2009 from the Editors of Planitazen  
10

**Dealing With Contentious Public Hearings**  
Did you just have a bear of a meeting? Practical advice from planners in the country on how to increase the odds that you won't face a early death at your next public hearing  
15

**Come to Order!**  
Our Newest Publication  
See Enclosed Insert —

## Professional Development Updates

By Ben Frost, Professional Development Officer

### **CM REPORTING GRACE PERIOD**

The first CM reporting period ended on December 31, 2009, by which time all AICP members should have reported 32 credit hours earned, including 1.5 hours each for Ethics and Law. But if you've been unable to do this, you've been granted an automatic "grace period" to earn and file your necessary credits. ***This grace period will end on April 30, 2010.*** Once you've fulfilled your 2008-09 requirements, the CM system will automatically create a new log for the 2010-11 reporting period.

Visit [www.planning.org/cm/endreportingperiod.htm](http://www.planning.org/cm/endreportingperiod.htm) to see a visual example of what you will see once you have completed the requirements.

### **NNECAPA CM CREDIT LOGGING GUIDE**

To help you log your CM credits, several chapters have collaborated on the creation of a template. This has been tailored to suit the peculiarities of the Northern New England Chapter, and it is available on the Chapter website under "Professional Development > Certification Maintenance".

### **SELF-REPORTED CREDITS**

Use the self-reporting tool that enables members to record up to eight credits within each two-year reporting period for activities that meet CM criteria but aren't registered by a provider. Click on the "Add Self-reported credits" button located on your CM log at [www.planning.org/cm/log/](http://www.planning.org/cm/log/) to access this tool.

### **TRAINING OPPORTUNITIES**

Find a listing of free CM credits that are offered

through distance education products at [www.planning.org/cm/free](http://www.planning.org/cm/free). There are more than 32 hours of free training available. Opportunities are added as they become available, so please check back frequently for the most current information.

### **Free Course: Planning for Healthy Places**

*Planning for Healthy Places with Health Impact Assessments* is the first in a series of CM-eligible online courses from APA. Through examples and activities, this "how-to" guide explains the value of Health Impact Assessments and outlines the steps involved in conducting one.

This course was developed in partnership between the American Planning Association and the National Association of County & City Health Officials and is offered free of charge through a grant from the Centers for Disease Control. CM | 6

[professional.captus.com/Planning/hia](http://professional.captus.com/Planning/hia)

### **Free Chapter Webinars**

A more than a dozen chapters of APA have pooled their resources to offer webcast training opportunities that are free to APA members. Below is the list of sessions scheduled for the upcoming several months. You can visit the APA Utah Chapter website to register for any of these: [www.utah-apa.org/webcasts.htm](http://www.utah-apa.org/webcasts.htm). CM | 1.5 each

- |          |  |
|----------|--|
| March 5  | <a href="#">Regulating Electronic On-Premise and Off-Premise Signs</a>       |
| March 12 | <a href="#">MyFace, Spacebook, Linking, Twitter....What?</a>                 |
| March 19 | <a href="#">The ABCs of RFPs and RFQs</a>                                    |
| March 25 | <a href="#">Sustain Floyd: A Case Study in Rural Economic Sustainability</a> |

**[Continues on Page 12](#)**

## State Grapevines

### Vermont

*By Polly McMurtry, VT State Director*

**Jeff Guevin**, a JD 2012 Candidate at the Vermont Law School, along with some other students, just started a Planning and Law student group. They are working with **Peg Elmer**, Associate Director of the Land Use Institute at the law school, and are looking forward to advocating for good planning in VT and elsewhere, getting involved in communities, and helping out wherever they can. They're still in the early planning stages (they've yet to come up with a catchy name, and are not officially approved by the Student Bar Association yet), but, it sounds like they are off to a great start! Glad to have some more folks out there advocating for good planning!

The Town of Colchester's Planning and Zoning Department recently went through a reorganization, following **Brenda Green's** departure to MYROW, a private telecom permitting firm. **Sarah Hadd** has been promoted to Director (congratulations, Sarah!) and the new Zoning Administrator is **Lisa Riddle** (welcome, Lisa!).

**Cathy LaRose**, Associate Planner with the City of South Burlington, passed the AICP exam in November! Congratulations Cathy! One of the side benefits of becoming AICP (besides having had to put in long hours studying for the exam) is she now is fully entitled to pay higher dues and spend a lot more money completing training requirements!

The Vermont Downtown Board recently approved the **City of South Burlington's** application for New Town Center designation, paving the way for the establishment of a multi-story downtown area on undeveloped lands surrounding the new Market Street across from University Mall, including the San Remo Drive area.

Manchester Planning Director **Lee Krohn**, AICP, received the Centennial Forestry Award in December, in a photo contest sponsored by the Vermont Department of Forests, Parks, & Recreation. His image, Sustainable Forestry at Hildene, was judged to best represent Vermonters' connection with our forests. Another congratulations in order!

In related news, Tree Steward Hall of Fame honors were recently awarded by the Vermont Urban and Community Forestry Council, in partnership with the Department of Forests, Parks and Recreation to the following:

- The Community Award to **The Peacham Tree** for its "hard work in protecting and maintaining the current canopy and planting new trees to ensure that 'noble' trees will line their streets and public spaces for generations to come."
- The Youth/Student Award to **Vickie Greenhouse's fourth-grade class at Mary Hogan School in Middlebury** for efforts to plant 15 trees on school grounds in celebration of Arbor Day 2009.
- The Practitioner Award to **Godfrey Renaud of Turner & Renaud, Inc., in Dummerston** for his early detection of hemlock woolly adelgid in southeastern Vermont.
- The Volunteer Group Award to **Transition Town Manchester** for selling 350 fruit trees as part of the worldwide 350.org event to reduce global carbon dioxide levels. The group's goal was to increase local food production while absorbing carbon for years to come.
- The Leader Award to **Sarah Albert of Plainfield** for her "inspiration and driving force behind many projects of great benefit to Plainfield."

[Continues on Page 12](#)

# Maine's Land Use Regulation Commission Approves Largest Rezoning in State History

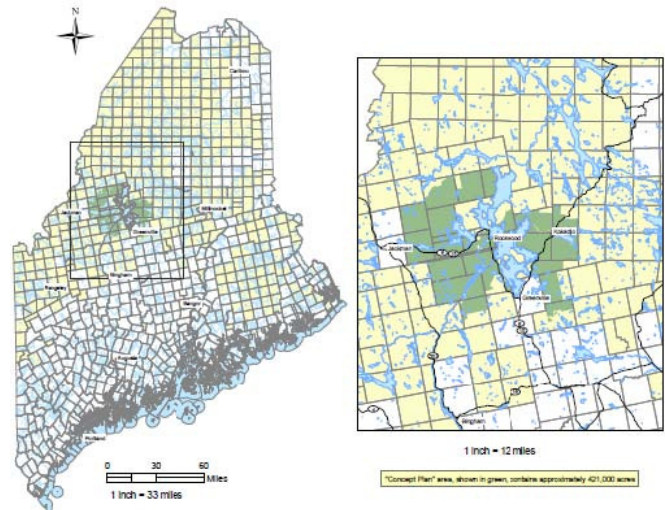
**(Continued from Page 1)**

Following a lengthy, multi-step process, LURC finalized the specific text of amendments, and Plum Creek accepted the final language as its own.

Approval of a Concept Plan requires that the Commission find, among other things, that the Plan will strike “a reasonable and publicly beneficial balance between appropriate development and long-term conservation of lake resources.”

**Development elements:** The major development elements of the 30-year Concept Plan include:

- Development areas encompassing about 17,000 acres, near settled communities and/or major roads.
- A maximum build-out of 2,025 units in these areas, counting both dwelling units and resort lodgings (hotel rooms, timeshare units, etc.), plus provision for affordable and on-site employee housing.
- Two resort zones within the development areas, one at Big Moose Mountain and one at Lily Bay. The resort zone at Lily Bay is limited to 404 units of all kinds.
- New scenic impact standards for development on hillsides, where a majority of the development will occur (away from lake shorelines).
- Enhanced rural subdivision layout and design standards to encourage efficient internal circulation for walkability, emergency response, and access to internal common spaces.
- A Canada lynx and traffic monitoring program in the Lily Bay area to provide LURC with up-to-date data in the review of development applications and to inform adaptive management strategies to minimize impacts on Canada lynx, a Federally threatened species.
- Required master plans and subdivision and site plan reviews prior to any development.



**Location MH Region Concept Plan**

**Conservation elements:** The major conservation elements of the plan include:

- Permanent conservation easement on 363,000 acres, or about 96% of the Concept Plan area, with a stewardship fund for the easement holder, Forest Society of Maine. The easement connects to other conserved lands, contributing to a network of nearly 2.25 million acres in Maine's North Woods.
- Location of the easement to permanently bound the 10 development areas, effectively greenlining development in perpetuity.

**[Continues on Page 8](#)**

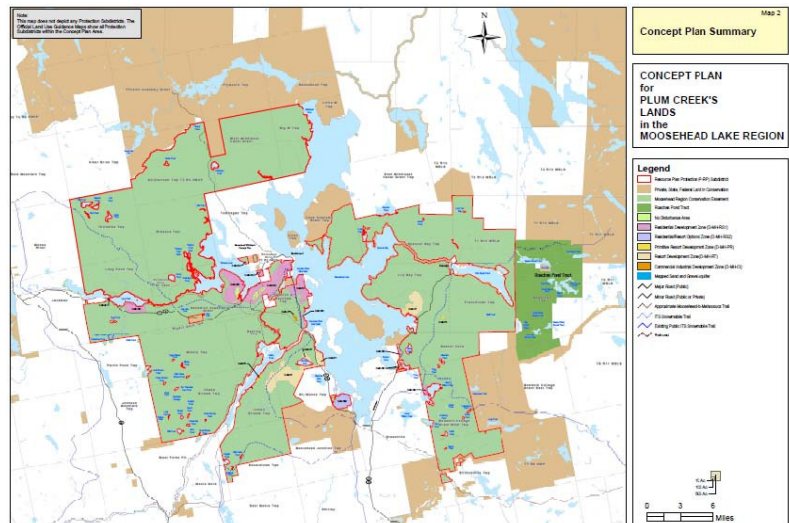
# Maine's Land Use Regulation Commission Approves Largest Rezoning in State History

**(Continued from Page 7)**

- Inclusion within the easement of 69 lakes and ponds, 163 miles of lake shoreline, an unbroken stretch of the Moose River along the Northern Forest Canoe Trail, the East and West Outlets of the Kennebec River, and the mountain peaks east of Moosehead Lake.
- Protected forestry management rights within the easement area, subject to sustainable forestry standards and a multi-resource management plan that is reviewed annually by a Management Advisory Team of agency and other experts in wildlife and other natural resources. Wind power development is allowed in a portion of the easement area.
- Public access rights for traditional, non-motorized recreation.
- Fee sale to the Appalachian Mountain Club of an additional 29,500 acres in the so-called Roaches Ponds tract immediately east of the Concept Plan area, with a permanent conservation easement on these lands, bringing total easement lands to nearly 393,000 acres.

## Other major elements:

- 160 miles of easements for existing and new hiking and snowmobile trails.
- A 57-mile road easement for vehicular access for recreational purposes, to be phased in with development.
- Donation of land and a low interest \$1.75 million loan to Coastal Enterprises, Inc., for affordable housing in the Moosehead Lake region.
- Mandatory stewardship fee of 2% on the initial sale of lots for residential development and 0.5% on re-sale of residential properties, with proceeds divided among a Moosehead Recreation Fund, a Wildlife and Invasive Species Fund, and an Affordable Housing Fund.



**Summary Maps MH Lake Concept Plan**

Three environmental organizations have filed appeals of LURC's approval of the Concept Plan. The full Concept Plan and the Commission's decision document can be found at <http://www.maine.gov/doc/lurc/index.shtml>.

*Evan Richert is a land use planning consultant who, with his partner Ronald Kreisman, Esq., assisted LURC senior planner Agnieszka Pinette and the Commission in their review of Plum Creek's Concept Plan for the Moosehead Lake Region.*

## It's Election Time! Make sure to vote

[\(Continued from Page 1\)](#)

### Candidates for APA Director Region 1

#### Angela Vincent



From the minute I began my work with APA eight years ago, I knew this organization was a good fit for me. I am always searching for ways to make a difference and I found that in APA. I am inspired to take on a larger role in the organization, which is why I am running for Region 1 Director. As planners who are working to make great communities, we need an organization who can develop and support us, who can provide the necessary professional development resources to continue building more sustainable communities to work, live and play in, and to support a movement that underscores the importance of all this and how we can

create it together.

As the Region 1 Director, I would represent the needs, desires, experiences, and obstacles of planners in this region. As the Region 1 Director, I would be fully committed to working with the APA Board of Directors to accomplish APA's goals to advance planning as an essential component of community sustainability, to continue to find ways to educate and support planners — the lifeblood of this organization — and to build an organization that is financially, politically and operationally successful to ensure that the planning movement endures for years to come. Help me help you make great communities.

[www.planning.org/elections/apa/vincent.htm](http://www.planning.org/elections/apa/vincent.htm)

#### David Woods



When I ran in 2006, my key goals for 2006 — 2010 were: 1) to improve communication among the APA Board, the Chapters and the Divisions; 2) to continue to emphasize affordable opportunities for professional development for all members; 3) to assure that the core services are provided for all members; and 4) to listen to the members' concerns and bring them back to APA for solutions.

On a personal level, since I was elected to serve on the Board in 2006, I received my Ph.D. in urban sociology from Fordham University, a long-term goal. I recently returned to lead GreenWoods Associates, a planning consulting firm, after serving for two years as the Commissioner of Planning for the Town of Brookhaven, New York. In the past twenty-five years, I have served as a planner in both public and private sectors, including roles and projects in the states of New York, New Jersey and Connecticut. I am proud to be a member of the American Institute of Certified Planners and to hold the Professional Planner license in the State of New Jersey. Again, I ask for your vote to continue to serve the Northeast Region as your representative on the APA Board of Directors.

[www.planning.org/elections/apa/woods.htm](http://www.planning.org/elections/apa/woods.htm)

[Continues on Page 10](#)

## It's Election Time! Make sure to vote

[\(Continued from Page 9\)](#)

### **AICP Commissioner Region 1**

#### **Brent Barnes, AICP**



For the past 15 years, I have served APA and AICP at both the chapter and national levels. Over those rewarding years, I have seen our organization grow in numbers and in stature. Despite the economic downturn, AICP continues to add members while other organizations decline. Even more significant, the rate of growth in people seeking the AICP credential has increased over recent years, particularly among young planners. Clearly, AICP is a credential that adds value for professional planners.

At the same time, the planning landscape is changing. The years ahead offer tremendous opportunity — and responsibility — for planners. We have the opportunity to take a leadership role in creating and implementing urban, environmental, energy, and other policies. As professionals, we have the responsibility to add value by guiding our communities toward sensible, sustainable growth. AICP is both our foundation on which to build and our guide for these efforts.

AICP needs to evolve as well, not just to respond to emerging issues, but to *anticipatetrends* and *shape futures*. We have committed to doing this is through continuous learning — Certification Maintenance. But, as an organization, we need to do more. [www.planning.org/elections/aicp/barnes.htm](http://www.planning.org/elections/aicp/barnes.htm)

#### **Deborah Alaimo Lawlor, AICP**



Over the past 7 years I have served APA at the chapter and national division level. I am a firm believer in volunteerism and have had the opportunity to work with many talented individuals on gratifying projects. I have found the planning profession to have limitless boundaries in terms of the types of projects we can get involved with career-wise. However, with that there comes good and bad. We know that we are capable of a variety tasks; it's just getting others to understand our capabilities.

AICP has made great strides to bring distinction to our profession over the past few years with the introduction of the Certification Maintenance program. As your AICP Region 1 representative, I would like to strengthen our position and draw greater focus to the qualities planners offer.

[www.planning.org/elections/aicp/lawlor.htm](http://www.planning.org/elections/aicp/lawlor.htm)

## President's Message

[\(Continued from Page 2\)](#)

and just begin to understand the process when their time is over. I feel new still, after a year and wonder how much influence the CPC has on actual Board decisions, but perhaps it's all been constructed to achieve a good balance. Paul Farmer, as Executive Director/CEO, takes his direction from the Board and Commission. The Board generally derives from Chapter Presidents or Division leaders who invest the time to work their way up. Having been Chapter Presidents, they seem more open to input from us, although ostensibly everyone is – APA is a member organization...they need us.

If you want to check out the nominated candidates, you'll find them at [www.planning.org/elections/index.htm](http://www.planning.org/elections/index.htm) . Please remember to vote online when we get triggered by messages from APA next month!

**NNECAPA has recently sent out a Request for Proposals for a re-development of the website in order to get more functionality.**

**If you are interested to view the RFP go to:**  
**[www.nnecapa.org/news/](http://www.nnecapa.org/news/)**

**The proposals are due Friday, March 19, 2010.**  
**Please share this information with Web design firms as you see fit.**

## State Grapevines

[\(Continued from Page 6\)](#)

### Maine

*By Rebecca Schaffner, ME State Director*

**Vanessa Farr**, Director of Planning and Development for the Town of Falmouth, recently received her CNU-Accreditation designation. CNU is a professional designation awarded by the Congress of New Urbanism on the nomination of the faculty of the Miami School of Architecture. Accreditation is awarded upon successful completion of an exam, and membership is maintained by participating in professional development activities and events. Special congratulations to Vanessa as she is the only such CNU-A recipient in the State of Maine!

**Daniel Stevenson** is the new Economic Development Director for the City of Biddeford. Dan is a former Biddeford City Planner and his most recent employment was with the Maine Department of Economic and Community Development where he worked on legislative and development issues out of the Commissioner's Office.

The **City of Belfast** has created a new Economic Development Director's position to promote business and economic development and to pursue grant opportunities for community projects.

## Professional Development Updates

[\(Continued from Page 5\)](#)

- March 26 [The Americans with Disabilities and Fair Housing Act: Implications for Local and State Government Planners](#)
- April 2 [Virginia: Using Form Based Regulations to Sustain Neighborhood Character](#)
- April 9 [The American Housing Survey](#)
- May 7 [Utah Chapter: TBA](#)
- May 14 [Implementing Planning Support Tools: Best Management Practices for Adoption and Use](#)
- June 4 [Urban Design and Preservation Division: TBA](#)
- June 11 [Transportation Division: TBA](#)
- June 25 [Understanding the Unserviced Workforce](#)
- July 9 [Land Use Law](#)

### **APA Training Online**

#### **Tuesdays at APA**

The free podcast recordings of the after-work lectures “Tuesdays at APA” are available for CM credit, CM | 1.0 per recording. AICP members listen to the audio recording and follow along with a provided PowerPoint. To participate, visit [www.planning.org/tuesdaysatapa/previous.htm](http://www.planning.org/tuesdaysatapa/previous.htm).

#### **Economic Development Today**

In partnership with APA, the U.S. Economic Development Administration is producing a series of broadcasts called Economic Development Today for up to CM | 2.0. To participate, visit [www.planning.org/eda/broadcastcm.htm](http://www.planning.org/eda/broadcastcm.htm).

#### **APA Online Courses:**

**Package Deal!** Save 10% when ordering the CM Ethics and Law Requirement Package. Includes both:

*Ethical Practice for Practicing Planners* – CM | 2.0 ETHICS

*Hot Topics in Planning Law* – CM | 3.0 LAW

**New!** *The Transportation/Land Use Connection* – CM | 6.0

To register, visit the Self-Directed study site, and select “online courses” at: [www.planning.org/education/selfdirected/index.htm](http://www.planning.org/education/selfdirected/index.htm).

**[Continues on Page 13](#)**

## Professional Development Updates

[\(Continued from Page 12\)](#)

### **AICP EXAM QUESTIONS**

Applicants can refer all exam related questions to [aicpexam@planning.org](mailto:aicpexam@planning.org). We also encourage you to check out our new AICP Exam web page at [www.planning.org/certification/index.htm](http://www.planning.org/certification/index.htm).

The Spring 2010 AICP Exam testing window will be open from May 10 to 24.

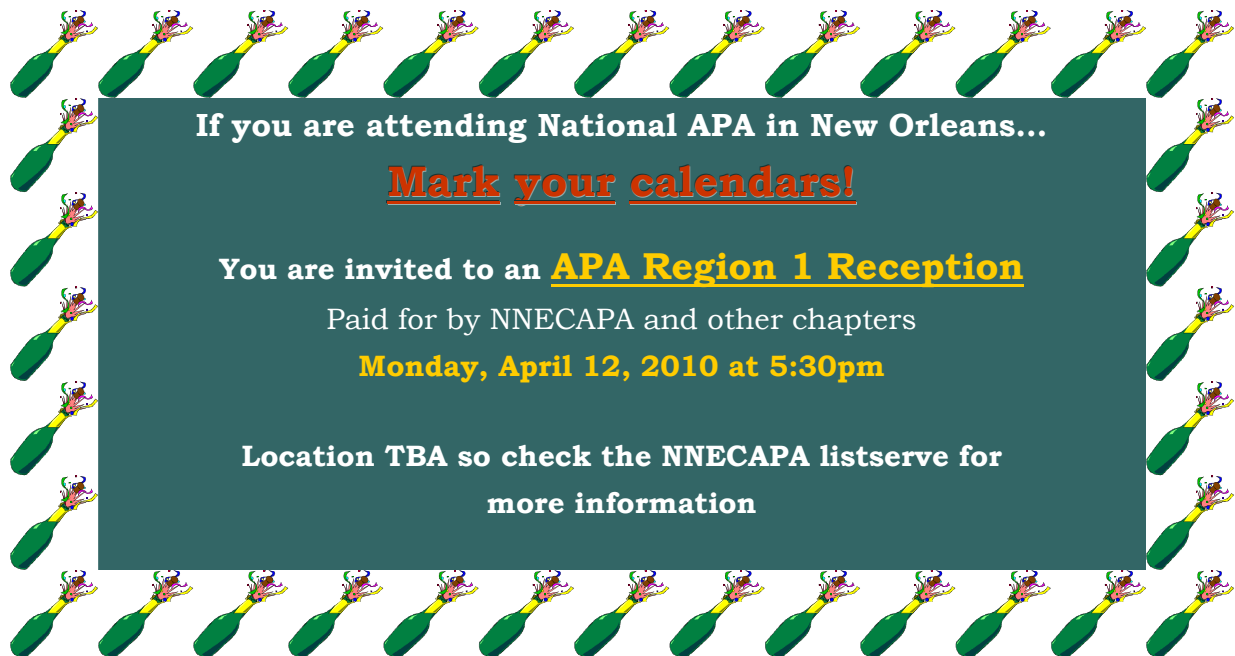
### **ADVANCED SPECIALTY CERTIFICATION (ASC)**

Starting in 2010, two Advanced Specialty Certifications will be available to AICP members:

AICP Certified Transportation Planner

AICP Certified Environmental Planner

Other ASCs are under consideration. For more information, please visit [www.planning.org/asc](http://www.planning.org/asc).



## NNECAPA's Executive Committee

### President

[Peg Elmer, AICP](#)

### Vice-President

[Carl Eppich](#)

### Secretary

[Nathan Miller](#)

### Treasurer

[Tara Bamford](#)

### Professional Development Officer (PDO)

[Benjamin Frost, AICP](#)

### Assistant PDOs

[Anna Breinich, Maine](#)

[Lee Krohn, AICP, Vermont](#)

### ME State Director

[Rebecca Schaffner](#)

### NH State Director

[Julie LaBranche](#)

### VT State Director

[Polly McMurtry](#)

### NH Legislative Liaison

[Kerrie Diers](#)

### ME Legislative Liaison

[MacGregor Stocco, AICP](#)

### VT Legislative Liaison

[Sharon Murray, AICP](#)

### Chapter Historian

[David White, AICP](#)

### Public Information Officer

[Sandrine Thibault, AICP](#)

### Faculty Liaisons

[Mary Adamo Robertson](#)

[Steve Whitman, AICP](#)

### Student Liaison

[Katherine Garvey](#)

## Events Calendar

### APA Webcasts

#### Workforce Housing Challenges

February 25, 2010

#### Historic Preservation Part II

February 26, 2010

#### Regulating Electronic Off-Premise and On-Premise Signs

March 5, 2010

#### MyFace, Spacebook, Linking, Twitter...What?

March 12, 2010

#### The ABCs of RFPs and RFQs

March 19, 2010

#### Sustain Floyd: A Case Study in Rural Economic Sustainability

March 25, 2010

**Details:** [www.utah-apa.org/webcasts.htm](http://www.utah-apa.org/webcasts.htm)

### 2010 APA National Conference

**Date:** April 10-13, 2010

**Venue:** New Orleans, LA

**Details:** [www.planning.org/conference/neworleans/index.htm](http://www.planning.org/conference/neworleans/index.htm)

### 2010 NNECAPA Annual Conference - Save the Date!

Date: October 7-8, 2010

Venue: Portsmouth, NH

Visit our Calendar frequently for additional professional development opportunities: [www.nnecapa.org/calendar](http://www.nnecapa.org/calendar)

**Are you working on an innovative project in your community?**

**Have you just finalized the creation or update on a plan you are proud of?**

Please share your successes with your peers and submit an article for the NEW Northern New England Community Highlight section of the Yankee Planner!

Contact NNECAPA PIO Sandrine Thibault ([sthibault@ci.burlington.vt.us](mailto:sthibault@ci.burlington.vt.us)) for information and publication deadlines.